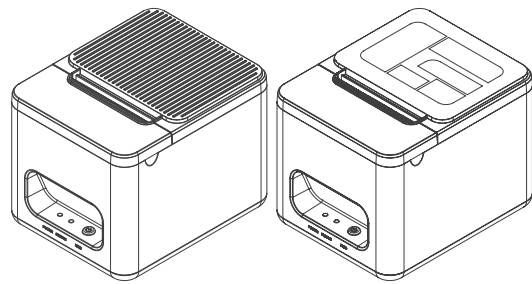


USER'S MANUAL



GA-E2001 / GA-F200

Proficient in Commercial POS Receipt Printers

1. Safety Notice

- * Don't touch the printer head with anything.
- * Don't touch the cutter blade.
- * Don't bend the power cord excessively or place any heavy objects onto it.
- * Don't use the printer when it is out of order. This can cause a fire or and electrocution.
- * When connecting or disconnecting the plug, always hold the plug but not the cord.
- * Keep the desiccant out of children's reach.
- * Use only approved accessories and do not try to disassemble, repair or remodel it by yourself.
- * Install the printer on the stable surface. Choose firm, level surface where avoid vibration.
- * Don't let water or other foreign objects into the printer.
- * Don't connect a telephone line into the peripheral drive connector.
- * We recommend that you unplug the printer from the power outlet if no use it for a long period.

2. Applications

- * POS system Receipts
- * EFT POS system Receipts
- * Gym, post, hospital, civil aviation system Receipts
- * Inquiry, Service system Receipts
- * Instrument test Receipts
- * Tax, Tab Receipts

3. Unpacking

After unpacking the unit, check that all the necessary accessories are included in the package.

User's Manual 1 PCS

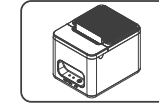
Printer 1 PCS

Data Cable 1 PCS

Power Adapter (include power cord) 1 SET

4. Features

- * 200-250mm/sec high-speed printing
- * Support Kitchen Printing and Ethernet Printing
- * High print quality
- * Low working noise
- * Support cashdrawer kick-out
- * Easy maintenance
- * Various interface available (Serial + USB + Ethernet+RJ11 cashdrawer)
- * Built-in data buffer
- * Support character enlargement, bold, underline, line spacing and character spacing
- * Support NV images download
- * Low energy consumption and low operation cost
- * Compatible with ESC/POS command set
- * Character per line and character settings
- * Support Ethernet Printing status monitor, multiple connection printing and OPOS printing
- * Support printer identification, software binding and high-speed driver mode
- * Support various character sets (include GB18030)



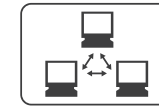
Paper shortage alarm



Electric cover opening



Gravity induction recognition



Multiple Connection Printing



Driver



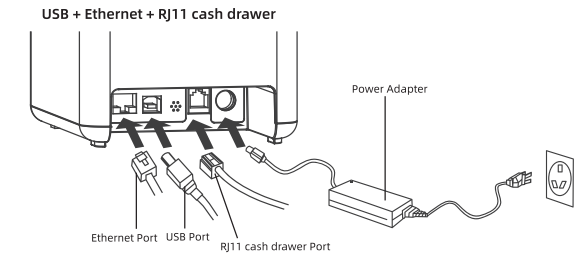
Various Character Sets

5. Specifications

Model	GA-E2001 / GA-F200
Print method	Direct thermal printing
Print density	576dot/line
Print speed	200-250mm/sec
Print width	72mm
Paper thickness	0.06-0.08mm
Paper diameter	Maximum 83mm
Print interface	USB + Ethernet + RJ11 cash drawer
Barcode type	UPC-A, UPC-E, EAN/JAN-8, EAN/JAN-13, CODE39, ITF, CODABAR, CODE93, CODE128, QR CODE
Buffer	64K SRAM, 256K Flash
Font type	Multilingual code page x 40 Simplified Chinese, Traditional Chinese
Font size	Standard font A: 12x12dot Standard font B: 9x17dot
Print command	ESC/POS compatible
Power supply	AC 110/220V,50-60Hz
Ac Adapter	DC 24V, 1.5A
Cash drawer	DC 24V/1A
Work environment	Temperature: 5 ~ 45°C Humidity:10 ~ 80%RH
Storage environment	Temperature:-10 ~ 50°C Humidity:10 ~ 90%RH
Dimension	130x161x126 mm(WxDxH)

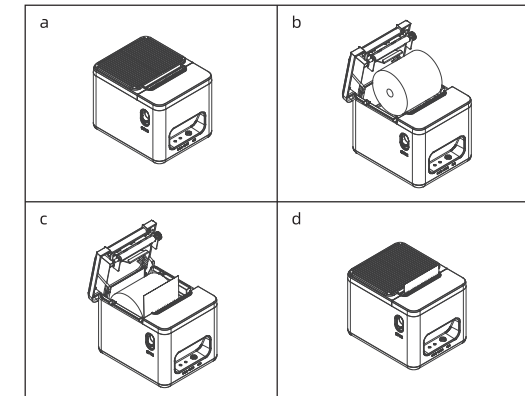
6. Printer Connection

- Plug the DC cord connector into the printer's power connector.
- Plug the data cable connector into the printer's interface connector.
- Plug the drawer cable into the drawer kick-out connector on the back of the printer next to the interface connector.

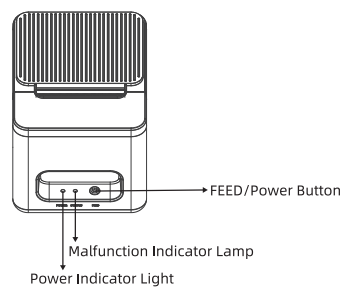


7. Installing the roll paper

- Open the printer cover.
- Place the paper roll into the printer.
- Pull out some paper outside the printer and then close the printer cover.
- Close the top cover. Press the printer cover to avoid error position of roll paper.



8. Buttons and Indicators



9. Functions of buttons and indicator lights

(1).FEED/Power Button

When the machine is turned off, briefly press to turn it on;
When in the power on state, short press to output paper;When turned on, long press to turn off.

(2).Malfunction Indicator Lamp

When this indicator light is on, the printer is in a state of paper shortage, open cover, or malfunctioning; When this indicator light is dim, the printer is in a normal state.

(3).Power Indicator Light

When this indicator light is on, the printer will be turned on;
When this indicator light is dim, the printer will turn off.

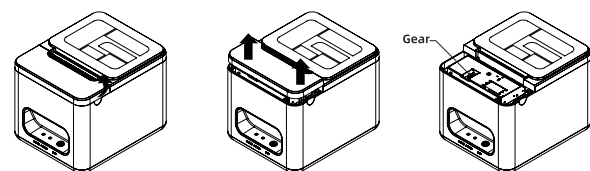
10. Cutter Maintenance

Step (1)

a. Turn off then on the printer, the printer will initialize and reset the cutter.

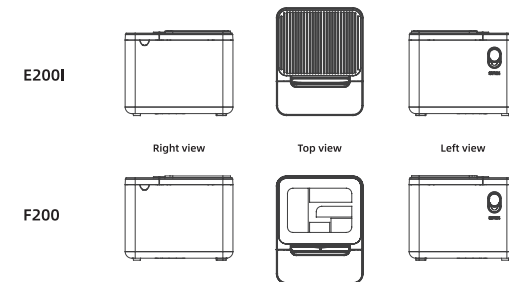
Step (2)

a. Remove the flip according to the diagram.



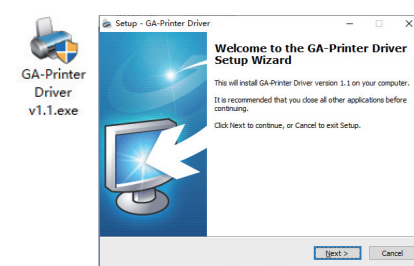
b. Wheel the gear on the cutter to make the cutter back to initial position. Open the printer cover and install roll paper correctly, then the printer works normally.

11. Printer Three Views

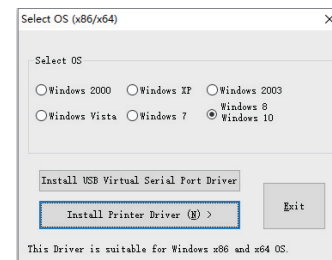


12. Driver Setup

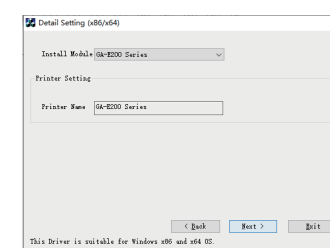
a. Insert the driver CD disk, run the GA-Printer Driver to set up, click "Next".



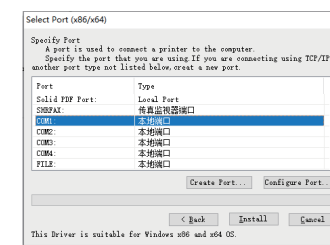
b. Select the operation system that you're using.



c. Select the driver GA-E200 Series and click "Next".



d. Select the corresponding printer port and click "Install".



e. Complete the setup.

