

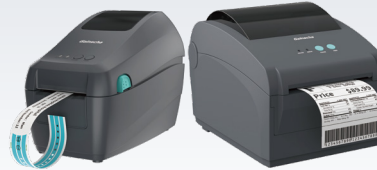


BARCODE PRINTER

Product Catalog



APEX SERIES



SURPASS SERIES



INTELLIGENT SERIES



LINERLESS SERIES



RECEIPT PRINTER SERIES



MOBILITY PRINTER SERIES

HARDWARE PRODUCTS LINEUP

Gainscha offers a wide range of printer series for customers, including the Apex Series, Intelligent Series, Surpass Series, and Elite Series. Each series is designed to meet specific needs and offer cutting-edge technology to enhance your printing experience.

Hi, I'm Haha.

I'm a member of the Gainscha family.



BARCODE PRINTER



GA-2408TE **RFID**

4 INCH DESKTOP RFID BARCODE PRINTER

Support to read, write and print on UHF RFID labels. 203dpi and 300dpi print resolution for choice. Thermal transfer and thermal print technology, work with various print media to maximize your investment.

Print Resolution	Max. Print Width	Max. Print Speed	Connectivity
203 dpi	4.09"	203 mm (8")/sec	USB 2.0, Bluetooth(optional), Wi-Fi(optional)

GS-2406T

4 INCH DESKTOP TT BARCODE PRINTER

Classic Surpass series barcode printer, easy to install print media, along with Bartender label editing software, feature-rich, stable and reliable, widely used in production and processing, sorting center, retail store, warehouse management, medical, financial, government label printing.



Print Resolution	Max. Print Width	Max. Print Speed	Connectivity
203 dpi	4.09"	152 mm (6")/sec	USB 2.0, USB Host 2.0, RS-232, Ethernet(optional), Bluetooth 4.0(optional), Wi-Fi(optional)



GS-2408D

4 INCH DESKTOP DT BARCODE PRINTER

4-inch fast-speed thermal label printer, work with 20mm ~ 120mm width roll/fan-fold labels. Available with Ethernet, USB Host, Bluetooth and Wi-Fi ports. Good for printing warehouse shipping label, shelf label, and wide-format labels for food stores such as sushi.



Print Resolution	Max. Print Width	Max. Print Speed	Connectivity
203 dpi	4.09"	203 mm (8")/sec	USB 2.0, USB Host 2.0, Ethernet(optional), Bluetooth 4.0(optional), Wi-Fi(optional)



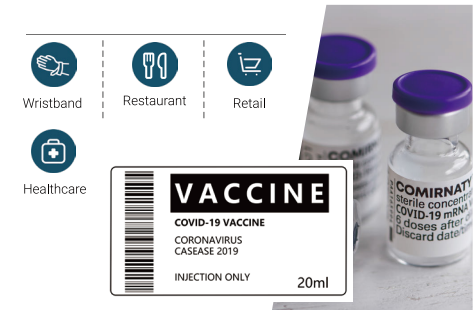
GS-2208D Two-Color

2 INCH DESKTOP DT BARCODE PRINTER

2-inch thermal label and wristband printer, no need ribbon, great to work with medical,entertainment and pets wristbands. For beverage, sweet, bakery and food store, it can print 20mm~60mm width thermal labels.



Print Resolution	Max. Print Width	Max. Print Speed	Connectivity
203 dpi	2.13"	203 mm (8")/sec	USB 2.0, USB Host 2.0, Ethernet, Bluetooth 4.0(optional), Wi-Fi(optional)





B300 | B310 | B380 Two-Color

3 INCH MOBILE LABEL & RECEIPT PRINTER

The printer provides watermark and optional two-color thermal printing for secure documents. With its compact, portable build, it enables receipt and label dual printing, and includes passive NFC for swift device pairing.

Battery Capacity	Max. Print Width	Max. Print Speed	Connectivity
2500mAh 2000mAh(optional)	72 mm	120 mm/sec	USB 2.0, Bluetooth Bluetooth 5.0(optional) Wi-Fi 2.4G/5G(optional)



GP-M421

4 INCH MOBILE LABEL & RECEIPT PRINTER

This printer is compatible with Windows, Android, and iOS, features an LED display, and supports CPCL/TSPL. It has a 3000mAh battery for long battery life and ensures quality prints.



Battery Capacity	Max. Print Width	Max. Print Speed	Connectivity
3000mAh	104 mm	35 mm/sec	USB, Bluetooth; USB, Wi-Fi(optional);



GP-M220RF

2 INCH MOBILE LABEL PRINTER

This compact printer supports batch and variable speed printing from 40- 70mm/s, with automatic learning for precise paper handling and an overheat protection feature that pauses printing when necessary.



Battery Capacity	Max. Print Width	Max. Print Speed	Connectivity
1500m	48 mm	70 mm/sec	USB, Bluetooth





GI-2408T Intelligent Series Industrial Printer

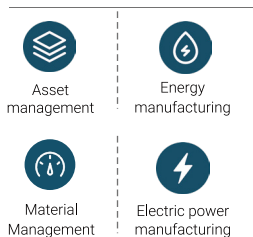
4-inch industrial printer, work with 450m ribbon and industrial-grade larger print media. Compatible with various printing languages and software for easy system integration. Equipped with high-quality touch screen, bringing users a smart, intuitive and convenient operation experience.

Print Resolution
203 dpi

Max. Print Width
4.09"

Max. Print Speed
203 mm (8")/sec

Connectivity
USB 2.0, USB Host 2.0, RS-232, Ethernet,
Bluetooth 4.0(optional), Wi-Fi(optional)



GI-2408T PLUS Intelligent Series Industrial Printer

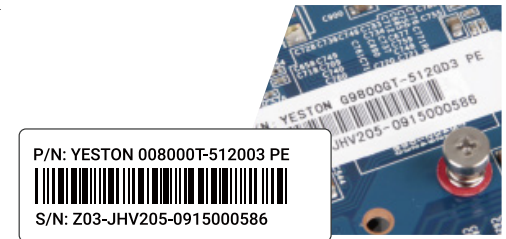
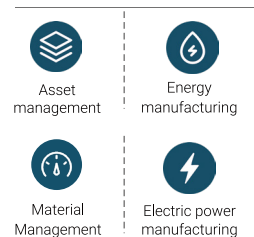
New GI-2408T PLUS is the most powerful barcode printer in Gainscha industrial printer line, durable construction, more extra features, for high-volume barcode printing in mission-critical applications, supported by 128MB SDRAM and 128MB Flash memory.

Print Resolution
203 dpi

Max. Print Width
4.09"

Max. Print Speed
203 mm (8")/sec

Connectivity
USB 2.0, USB Host 2.0, RS-232,
Ethernet, Bluetooth 4.0(optional),
Wi-Fi(optional), I/O port(optional)



TECHNICAL SUPPORT



Label Designer



Bartender

- Industry leading software
- Free edition



Printer Driver



Driver & SDK

- Windows Driver
- Linux Driver
- Android SDK
- iOS SDK



Test & Operate



Technical Support

- Windows Utility
- Android Utility
- User manual
- Quick guide
- Operation video
- FAE support



Printer Upgrade



Upgrade Utility

- Remote upgrade
- Firmware maintainable

Tel: +86 150 1832 0069

Email: sales@gainscha.com

Website: www.gainscha-aidc.com

Address: No. 625 Xinsha 5th Street, Tangjiawan Town, Zhuhai High-tech Zone, Zhuhai, Guangdong Province, China, Postal Code: 519060

Gainscha
Reliable and Innovative